

Painting Past Present Laing Art Gallery, Newcastle upon Tyne. 28 Sep 2013 - 09 Feb 2014

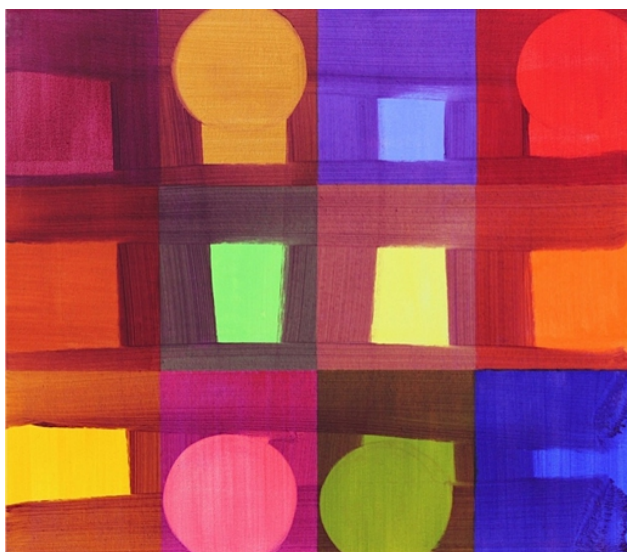
Eleven painters have been invited to hang a work alongside a painting of their choice from the collection of the Laing Art Gallery. Curated by the artist Helen Baker.

My Painting *Due North* hangs alongside *Evening at Boothby* by Winifred Nicholson .
For the catalogue of the exhibition I have written:

This painting shone out as I walked through the galleries, and I kept coming back to it. Winifred Nicholson's written observations on colour, how it constructs luminosity and pictorial space, are evangelical and persuasive. Her touch has a casual ease, and her subject matter can take the risk of being charming, but her wit and rigour as a painter are very present here. I like the way that the central dissecting band of distant hazy orange includes a close-up, a flower-face with a confrontational identity and a halo of lilac. The choreography then gets complex, with rhyming curves and echoing colours, stripes and striations moving in and out and up and down, all in an odd rhythm. I'm taken inside painting space, as offered by the depiction of a dark vase holding a few sprigs, seen against brightness. Just touches of pigment on a flat surface. The light emanating from the painting is very specific, expanding space. When I pause from trying to figure out how this is achieved, and return to the simple wholeness of the work, it seems mysterious and marvelous, and not casual at all.



Winifred Nicholson *Evening at Boothby* 50.5 x 60.5 cm Oil on canvas 1953



Mali Morris *Due North* 70 x 80 cm Acrylic on canvas 2013